

# BRASS!

for Piano

♩=132 With a medium swing

BBE Brass Foundations

Musical score for the first system, measures 1-4. The key signature is three flats (B-flat major/C minor) and the time signature is 4/4. The tempo is marked as ♩=132 with a medium swing. The music is for piano. The first staff is a treble clef with a whole rest. The second staff is a grand staff with a forte (*f*) dynamic. Chords are indicated above the piano part: Db, Gb6, Db, and Ebm/Gb.

Musical score for the second system, measures 5-8. The key signature is three flats and the time signature is 4/4. The music is for piano. The first staff is a treble clef with a whole rest. The second staff is a grand staff. Chords are indicated above the piano part: Db, Gb6, G°7, and Db/Ab. Dynamics include *sfz* and *sfz*.

A

Vocal line for the first phrase, measures 9-12. The key signature is three flats and the time signature is 4/4. The dynamic is *mf*. The lyrics are: *mf* You can learn to do some - thing that's cool and sounds quite cl-ever, ma-king

A

Piano accompaniment for the second phrase, measures 9-12. The key signature is three flats and the time signature is 4/4. The dynamic is *mf*. Chords are indicated above the piano part: Db, Ab/C, Bbm, Gb5, and Db.

13

mu - sic makes you feel\_\_ good, is - n't bo - ring what-so - e - ver\_\_ You

Ebm Fm Gb Ab(add4)

17

get to be\_\_ a part\_\_ of some thing mind blo-wing and fun and you'll

B

Gb Db F7 Bbm Ab

21

love being in a band cos their's a place for ev' - ry - one.

molto rall. . . . . A tempo

Gb Db Dbm/Ab Ab7

25 **C** Brass! Brass!

*f* Brass! if you choose it, Brass! can groove it,

**C** Db Gb6 Db Ebm/Gb

29 Brass! whispered

Brass! it's in-stru-men-tal, Brass! soft and gen-tle,

Db Gb6 Db/Ab

*sfz*

33 **D** Brass! Brass!

Brass! will pow-er through it, Brass! can jazz and blues it,

**D** Db Gb6 Db Fb(omit5)/Gb Ebm/Gb

37 Brass!

Brass! march to it, Brass! you can do it!

Db Gb Gm(omit5) Db/Ab Db/Ab

Straight sfz swing

41 **E**

You can play the cor - net when you're hang - ing out at home, you can

*mf*

**E** Db Ab/C Bbm Gb<sup>5</sup> Db

*mf*

45

play the te - nor horn, — the bass, or e - ven the trom - bone , — but

Ebm Fm Gb Ab(add4)

*f*

49 F

when we play to-ge - ther and the sound blows you a - way, that's the

F G $\flat$  D $\flat$  F B $\flat$ m A $\flat$

53 **molto rall..** **A tempo**

Brass Band bug that's got you... and that's why we learn to play...

G $\flat$  D $\flat$  D $\flat$ m/A $\flat$  A $\flat$ <sup>7</sup> **molto rall..** **A tempo**

57 G Brass! Brass!

Brass! if you choose it, Brass! can groove it,

G D $\flat$  G $\flat$ <sup>6</sup> D $\flat$  E $\flat$ m/G $\flat$

61 Brass! whispered

Brass! it's in-stru-men-tal, Brass! soft and gen-tle,

Db Gb<sup>6</sup> Db/Ab

*sfz*

65 Brass! Brass!

Brass! will pow-er through it, Brass! can jazz and

Db Gb<sup>6</sup> Db

**H**

68 Brass!

blues it, Brass! march

Fb(omit5)/Gb Ebm/Gb Db

70

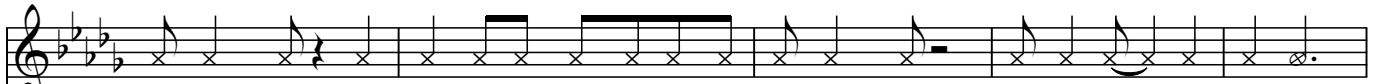
to it, Brass! you can do it! Being

Gb Gm(omit5) Db/Ab Db/Ab

Straight *sfz* swing



80

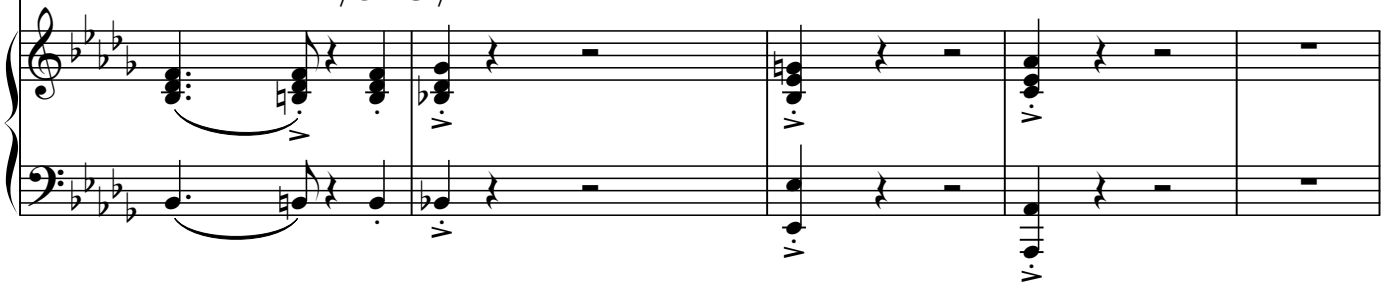


it some class, being right in the mid - dle gi - ving it some class, A - cing life\_ and play - ing\_

it some class, Being right in the mid - dle giv - ing it some class, A - cing life\_ and play - ing\_

from it. class, Being right in the mid - dle giv - ing it some class, A - cing life\_ and play - ing\_

Bbm Db7(omit5)/Cb Gb/Bb Eb Ab

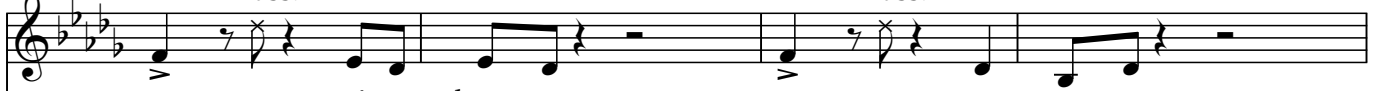


85

J

Brass!

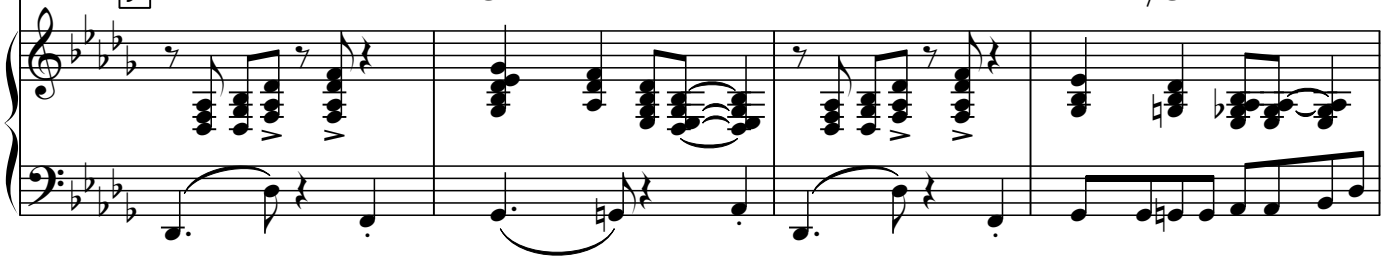
Brass!



Brass! if you choose it, Brass! can groove it,

J

Db Gb6 Db Ebm/Gb



89

Brass!

whispered



Brass! it's in - stru - men - tal, Brass! soft and gen - tle,

Db Gb6 Db/Ab



93 K Brass! Brass!

Brass! will pow-er through it, Brass! can jazz and

K Db Gb<sup>6</sup> Db

96 Brass!

blues it, Brass! march

F<sup>b</sup>(omit5)/G<sup>b</sup> Ebm/G<sup>b</sup> Db

98

to it, Brass! you can do it!

G<sup>b</sup> Gm(omit5) Db/Ab Db/Ab

Straight sfz swing